

Z1 Z FENDER BRACES INSTALLATION MANUAL



This Installation Manual is intended for the following models:

2023+

Nissan Z

PROLOGUE:

Study these instructions completely before proceeding to assembly. The installer must have a thorough knowledge of automotive systems operation. If unfamiliar with any of the concepts outlined in this instruction, we recommend the installation be completed by a qualified professional.

WARNING!

Extreme caution should be taken when performing maintenance or performance upgrades to your vehicle. Please observe and abide by any Warning or Caution labels placed on the various components and tools used when servicing your vehicle. If you have any questions regarding installation or the various components included with the Z1 Motorsports Z Fender Braces, consult with a Professional Mechanic, or contact Z1 Motorsports for more information.

PARTS INCLUDED:

Item	Quantity	Description
1	1	Driver Side Fender Brace
2	1	Passenger Side Fender Brace
3	4	M8 Rivnut
4	4	M8 Bolt

TOOLS REQUIRED:

- Hydraulic Jack
- (2) 2-Ton (or greater) Jack Stands
- Ratchet
- Ratchet Extension(s)
- Assorted Metric Wrenches
- Assorted Metric Sockets
- Pliers
- Trim Removal Tool
- RivNut Installation Tool
- Knife

SAFETY REQUIREMENTS:

- Always wear safety glasses and any necessary protective garments. If using any fluids, chemicals, or solvents, a respirator is recommended.
- Always turn the ignition to the OFF position and disconnect the NEGATIVE battery terminal.
- Always use properly rated jack stands when working under your vehicle.
- Always keep limbs and parts away from moving drivetrain parts.
- Only operate drivetrain in safe space and well-ventilated areas.

BEFORE YOU BEGIN:

Remove contents from the Z1 Motorsports Z Fender Braces and verify that ALL necessary hardware is present.

PROCEDURE:

1. Place the transmission in Park position (or in Reverse gear if equipped with a manual transmission). Apply the parking brake.
2. Break loose the front lug nuts but do not remove them.
3. Locate the proper jacking points on the vehicle's chassis (refer to the Vehicle's Owner's Manual). Raise and support the vehicle using a jack and jack stands.
4. Remove the front wheels and lug nuts.
5. Open and support the hood of the vehicle.
6. Remove the Engine Undershroud. It will be secured with multiple bolts and plastic clips. Retain all hardware.
7. Remove the (5) five plastic clips and (5) five bolts securing the Fender Liners to each side of the vehicle and remove the Fender Liners. *Figure 1.*



Figure 1

8. Remove the Plastic Clips securing the Radiator Air Guide to the top of the Core Support and Front Bumper. There will be (16) sixteen clips total. Remove the Air Guide. *Figure 2.*



Figure 2

9. With the Radiator Air Guide removed, remove the last Plastic Clip securing the top of the Front Bumper to the Core Support. *Figure 2.*



Figure 3

10. Remove the (1) one screw on each upper corner of the Front Bumper securing it to the Front Fenders.
Figure 4.



Figure 4

11. Disconnect the (2) two electrical connectors on the bracket in the passenger side Wheel Well. *Figure 5.*



Figure 5

12. Remove the Plastic Tabs securing the Front Bumper at the corner of the headlights, as well as the bottom of the headlights. Carefully pry the bumper away from the headlights to release it and set aside once removed.

13. On the underside of the vehicle, remove the (7) seven bolts securing the Side Skirts to the vehicle. *Figure 6.*

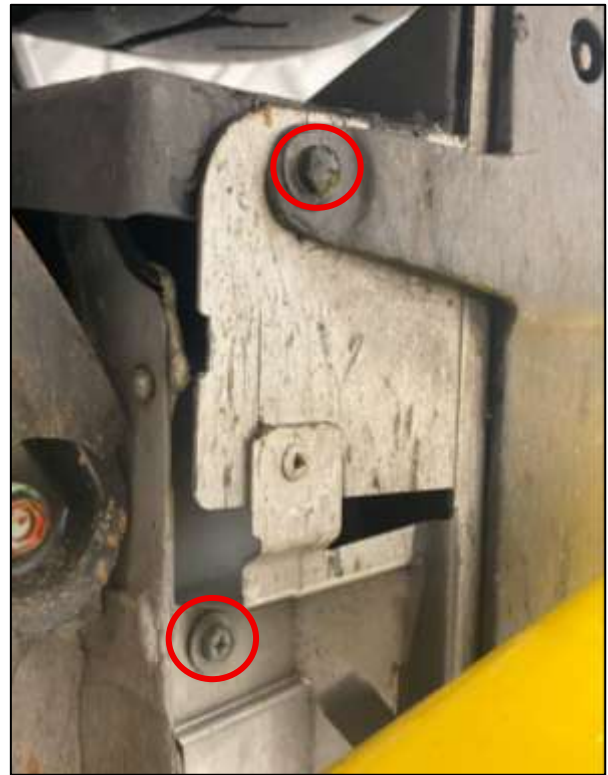
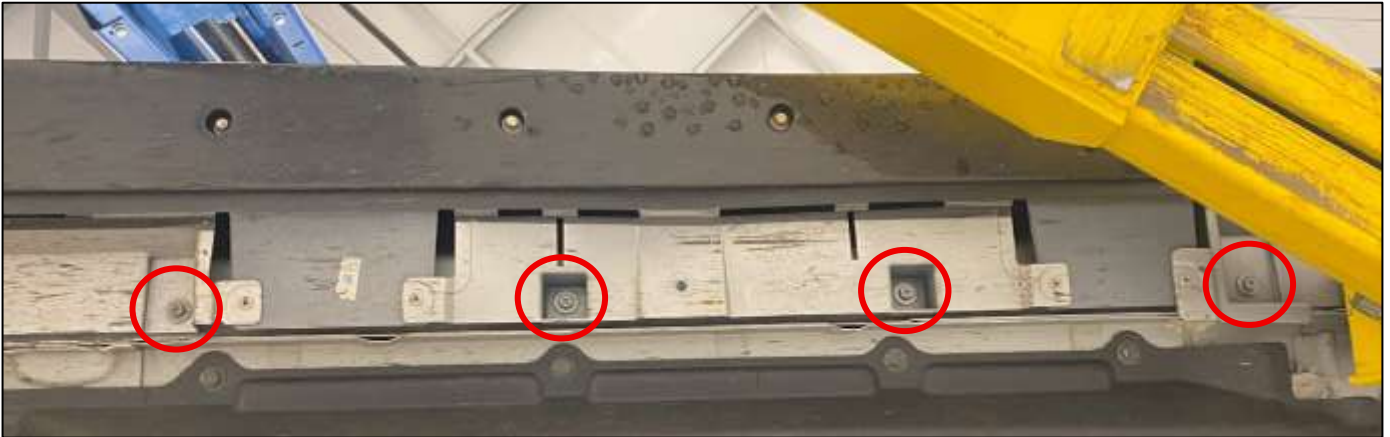


Figure 6

14. Remove the (3) three Screws and on the front and rear of each side skirt in the Fender Well. Depending on the tools available to you, you may need to remove the rear wheels for access to these screws. *Figure 7.*



Figure 7

15. Remove the (2) two nuts securing the plastic trim piece on the rear on each side of the vehicle and remove the trim piece. *Figure 8.*



Figure 8

16. Pull each side skirt away from the vehicle. They are held on by a few plastic clips that will need to be released as well. Once fully released, set the side skirts aside. *Figure 9.*



Figure 9

17. If any clips were left in the vehicle when removing the side skirt, remove them from the vehicle and reinstall them into the side skirts. *Figure 10.*



Figure 10

18. In the engine bay, remove the rubber trim piece on each side, they are each secured by (1) one clip underneath. *Figure 11.*

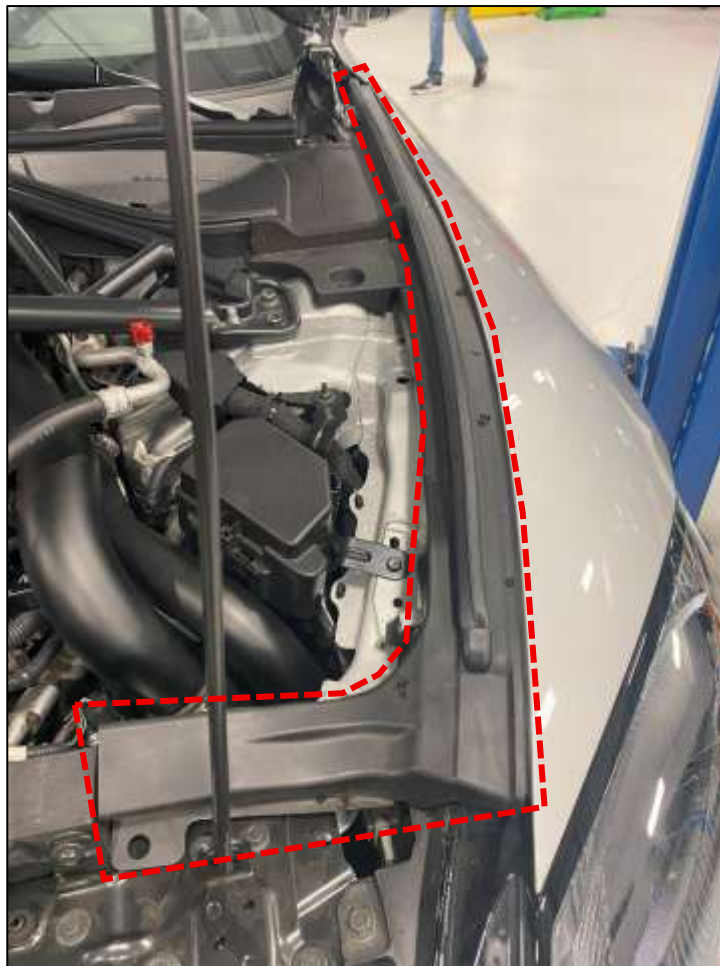


Figure 11

19. Remove the (2) two bolts on the side of each Headlight. *Figure 12.*



Figure 12

20. Remove the (1) one bolt on the underside of each Headlight. *Figure 13.*



Figure 13

21. Remove the (1) one bolt on the top of each Headlight. *Figure 14.*



Figure 14

22. Pull the Headlight forward slightly and disconnect the main connector to the headlight. Once disconnected, remove the headlight from the vehicle. *Figure 15.*



Figure 15

23. Remove the (1) one Fender Bolt that was hidden behind each headlight. *Figure 16.*



Figure 16

24. Open the Door and remove the (2) two bolts securing the Fender to the inside of the Door Jamb. *Figure 17.*



Figure 17

25. Remove the (2) two bolts securing the bottom of the Fender to the vehicle. *Figure 18.*



Figure 18

26. Loosen but do not fully remove the (4) four bolts securing the top of the Fender to the vehicle. *Figure 19.*



Figure 19

27. Slightly pull the Fender away from the body. On the rear of the Fender is a layer of tape/glue from the factory that will need to be cut with a blade to fully separate the Fender.

28. Once the tape is cut, remove the (4) four bolts on the top of the Fender and remove the Fender from the vehicle. *Figure 20.*



Figure 20

29. On the Driver's side of the vehicle, unclip the Washer Fluid Hose.

30. Using a 9/16" Drill Bit, enlarge the (2) two factory holes. Be careful not to enlarge the holes too much, otherwise the RivNuts will not seat properly. *Figure 21.*

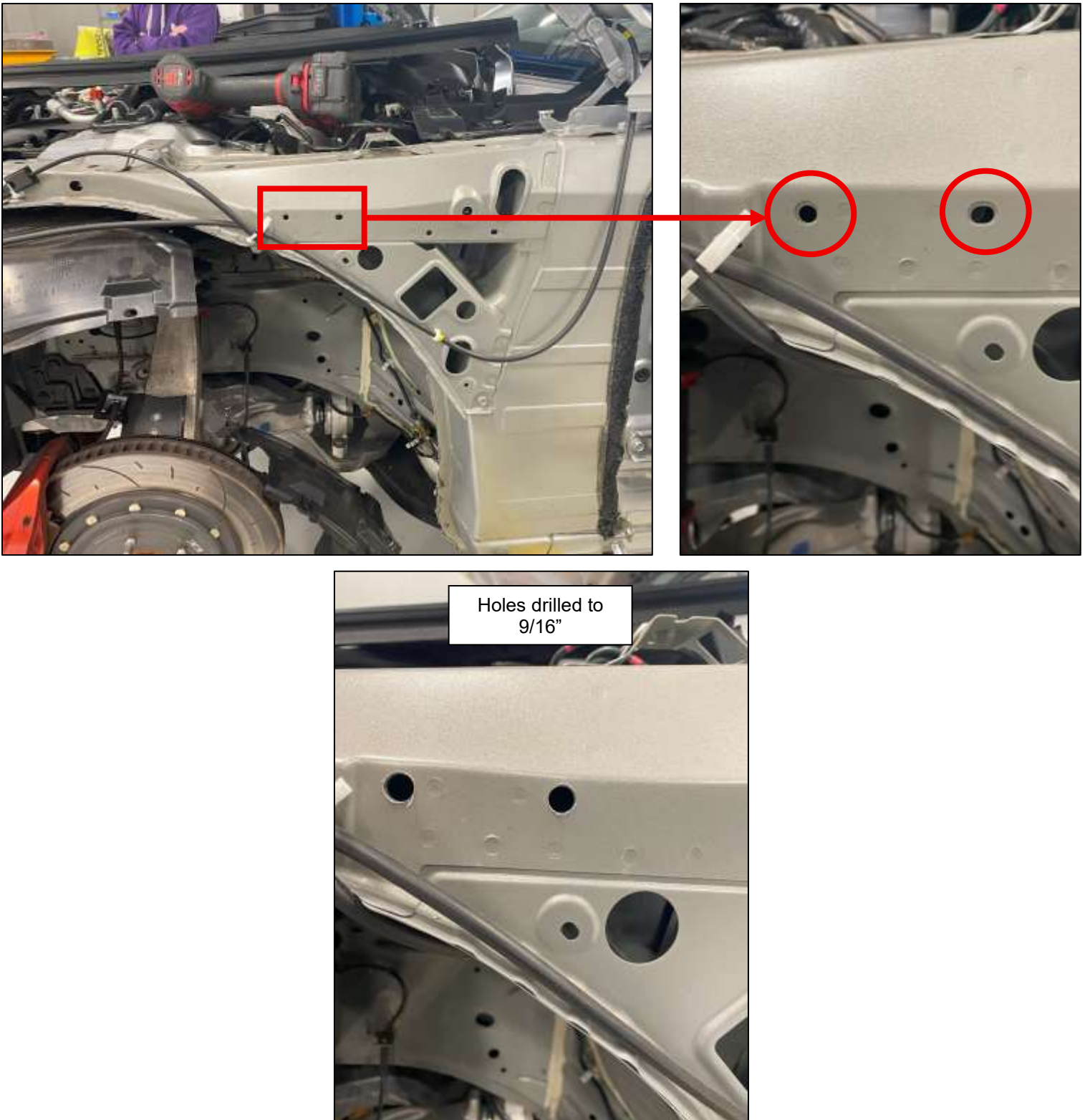


Figure 21

31. Install (1) one RivNut into each hole enlarged in Step 30. Figure 22.

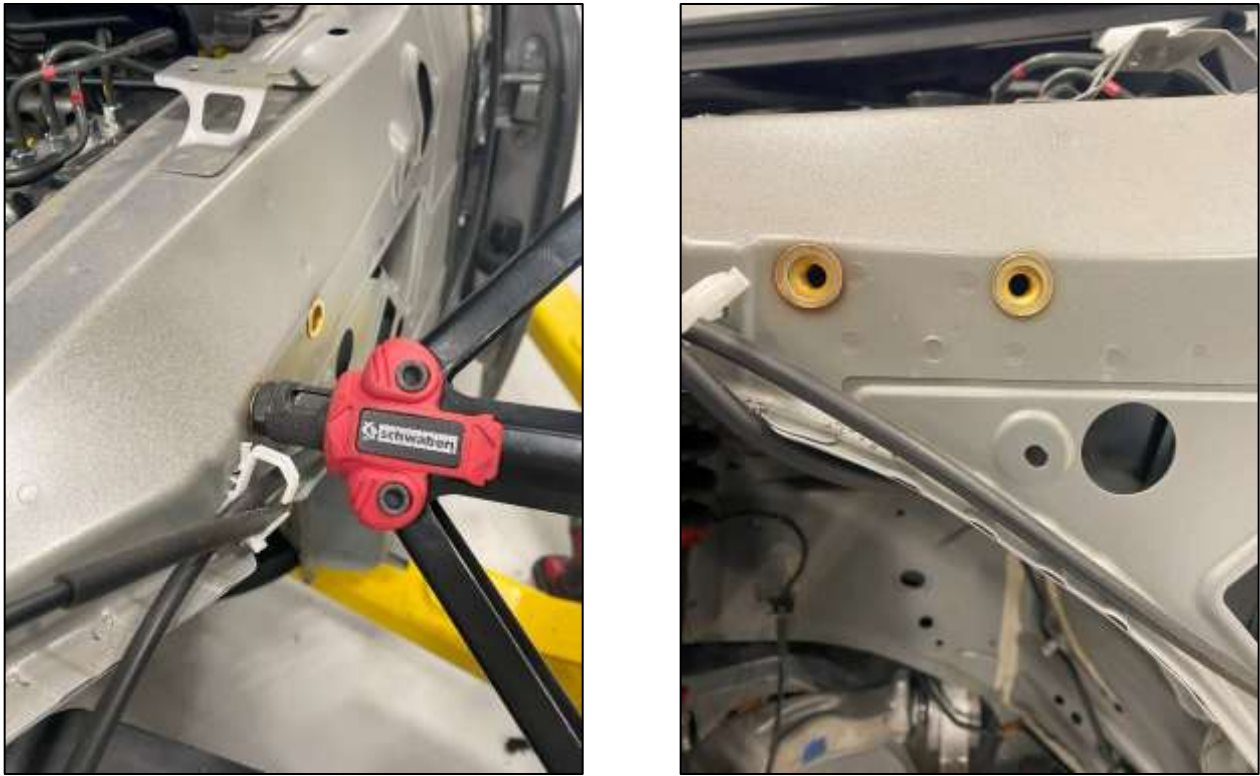


Figure 22

32. Remove the forward most bolt from each Door Hinge. Retain these bolts. Figure 23.

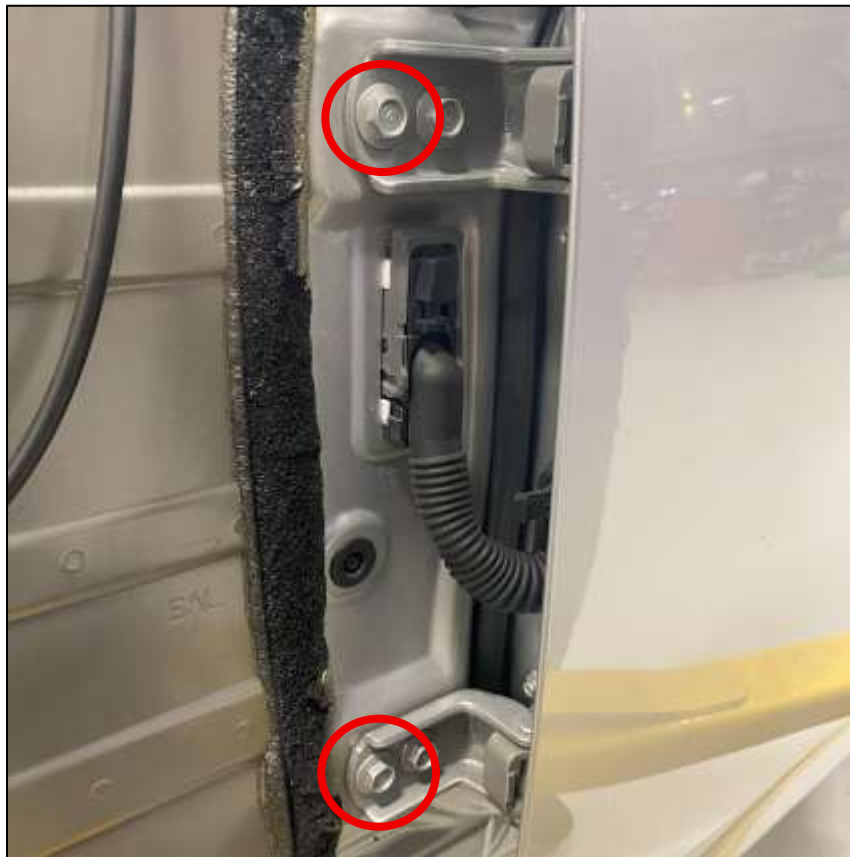


Figure 23

33. Locate the Fender Braces and M8 Hardware. Position the Fender Braces onto the vehicle as shown, and secure with the M8 Bolts at the front into the RivNuts. Reinstall the Door Hinge Bolts to secure the rear of the Fender Braces. *Figure 24.*



Figure 24

34. Follow *Steps 2-29* in reverse order to reinstall all body and trim components.

END

Additional Technical Support:
Contact Z1 Motorsports at info@z1motorsports.com
Or call 770-838-7777 between 9am and 6pm ET